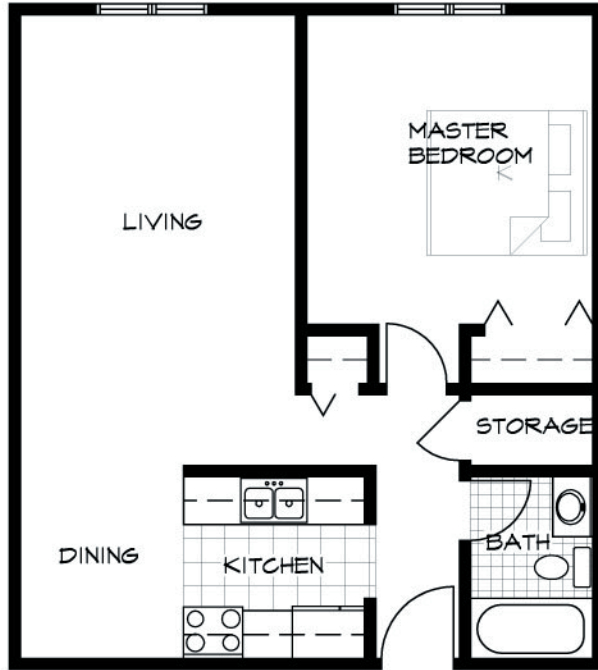


# Edgecliff Apartments

1015 East Central Entrance

Duluth, MN



FLOOR PLAN - TYPICAL 1 BEDROOM  
1/8" = 1'-0"

Contact: (218) 720-3712 - Email: [info@melhus.org](mailto:info@melhus.org)

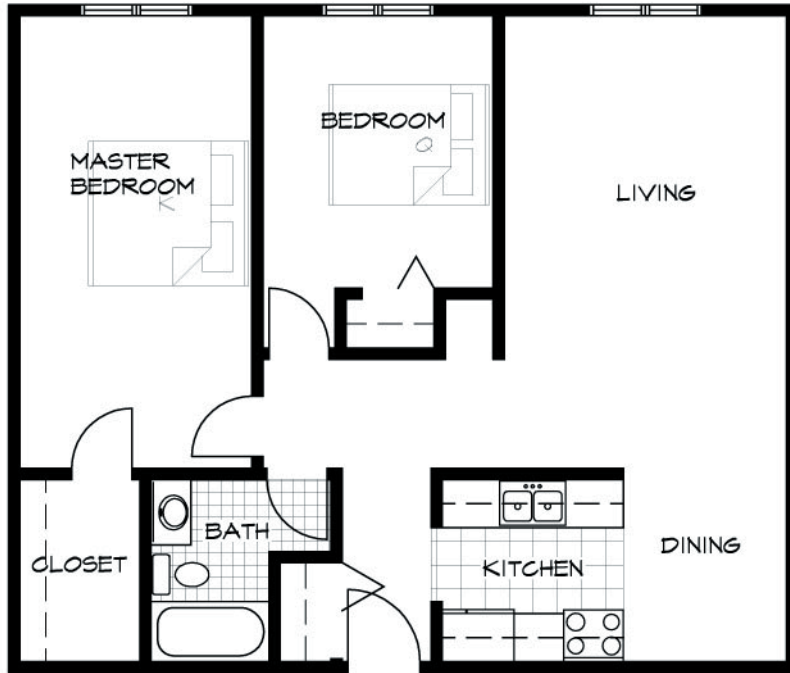


MELHUS  
MANAGEMENT  
COMPANY  
REAL ESTATE INVESTMENT SERVICES

# Edgecliff Apartments

1015 East Central Entrance

Duluth, MN



FLOOR PLAN - TYPICAL 2 BEDROOM

1/8" = 1'-0"

Contact: (218) 720-3712 - Email: [info@melhus.org](mailto:info@melhus.org)



MELHUS  
MANAGEMENT  
COMPANY

REAL ESTATE INVESTMENT SERVICES